

Tectum &Murus®

u|s
U.S. PROFILES



Welcome to the world of aluminum and shadows.

U.S. Profiles LLC is the general representative for the U.S. market.

Premium Brand Tectum&Murus

Welcome to the world of aluminum and shadows with our premium brand Tectum&Murus. These are innovative ceiling and floor molding systems, unique to our market.

Our mission is to provide architects, interior designers, investors, and contractors with solutions that not only elevate the visual impact of a space but also ensure precision and accuracy in every detail of execution.

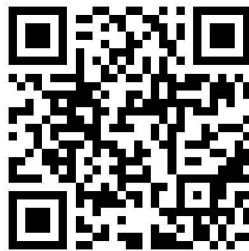
We understand that junctions in interiors are rarely flawless—whether it's the meeting point between wall and ceiling or wall and floor. Our product was created precisely to overcome that challenge. We believe the Tectum&Murus system is more than just a way to separate two surfaces; it is a subtle play of light and shadow that brings depth, dimension, and character to any space.

We take great pride in our ability to transform architectural visions into breathtaking reality through Tectum&Murus. Whether for commercial or residential projects, our commitment to pushing the boundaries of design possibilities remains unwavering.

With our premium line of Tectum&Murus profiles—modern systems designed for both interiors and exteriors—you can resolve every design challenge with elegance and precision.



Instagram



SHOP



YouTube

Tectum series

Tectum T1 profil	3.
Tectum T2 profil	5.
Tectum T3 profil	7-9.

Murus „H,, series

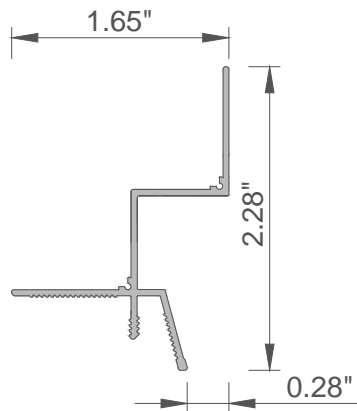
Murus H1 profil	11.
Murus H2 profil	13.
Murus H3 profil	15.

Murus „L,, series

Murus L1 profil	17.
Murus L2 profil	19.
Murus L3 profil	21.

Profile for creating a shadow line

The Tectum “T1” series profile is designed to create a 7 mm shadow line on the ceiling. It is intended for suspended ceilings and is installed at the wall-to-ceiling joint, providing the effect of a “floating ceiling” while also preventing cracks or other deformations. The profile allows perfect matching of different colors and materials thanks to the gap that creates the shadow. It replaces the traditional UD profile and directly accommodates CD profiles.



Brand: Tectum & Murus

Profile: T1

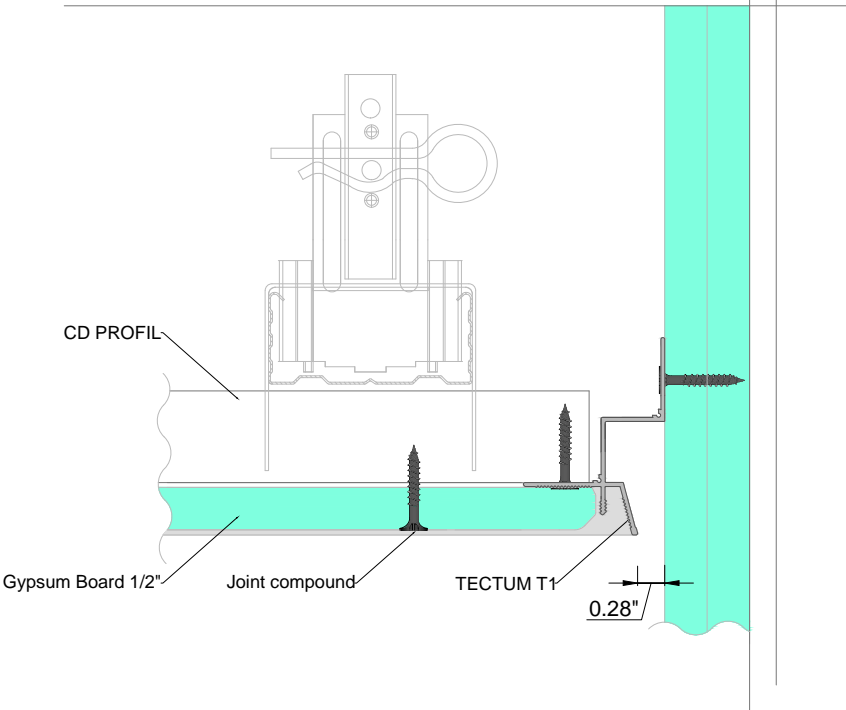
Color: black, white

Material: aluminum

Country of origin: Europe



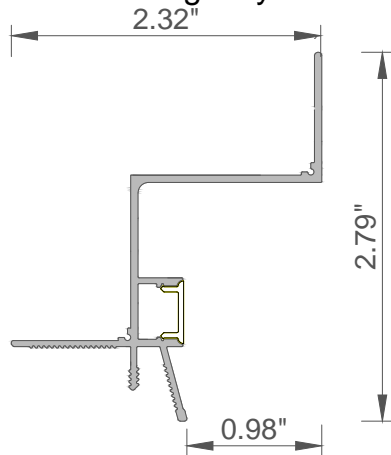
Instruction & Video





Profile for creating a shadow line with LED lighting

Tectum “T2” profile creates the unique effect of a ceiling that appears to float in the air, thanks to LED lighting installed along the profile’s edge. The distance from the wall is adjustable and can be set to any measurement starting from 25 mm and above. With its soft transition and backlighting, the profile perfectly absorbs and conceals wall irregularities, providing a seamless connection between the ceiling and wall surfaces—even those with textures or decorative panels. “Floating ceilings” emphasize the spaciousness of an interior and visually enhance the room, while spectacular ambient lighting adds a special atmosphere. The lighting can be complemented with either a milky diffuser (for soft, even light) or a black diffuser (for a bold, modern contrast), making this solution both unique and adaptable to various interior design styles.



Brand: Tectum & Murus

Profile: T2

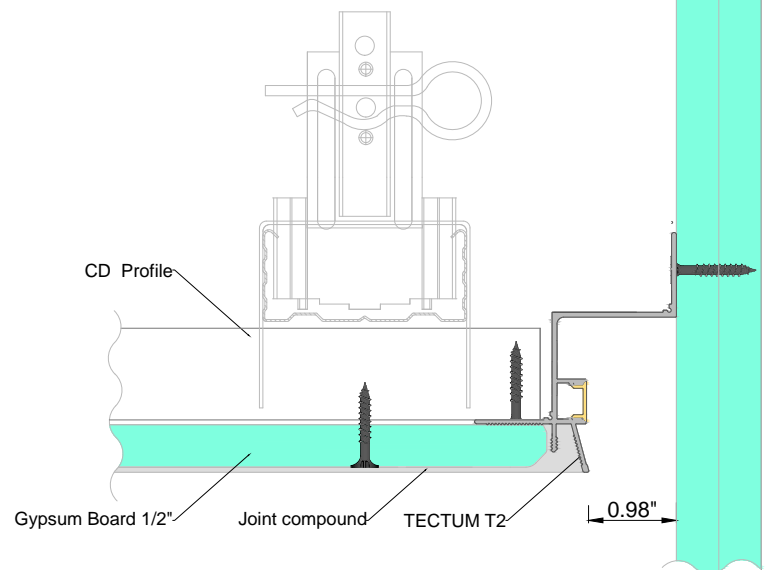
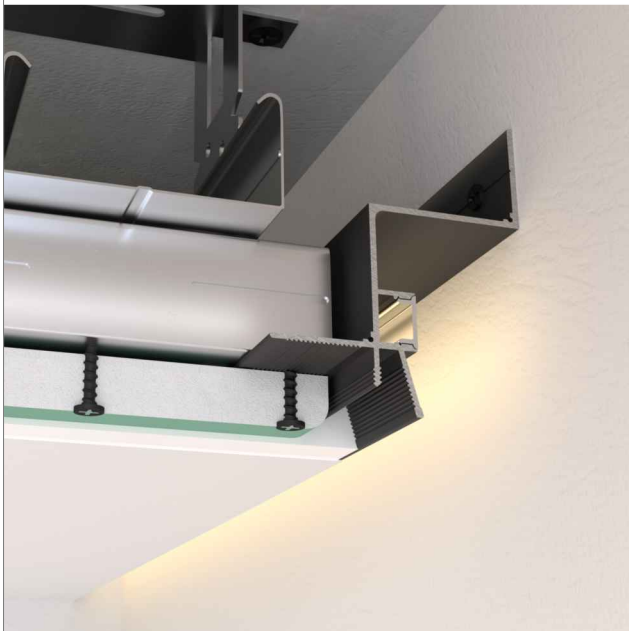
Color: black, white

Material: aluminum

Country of origin: Europe



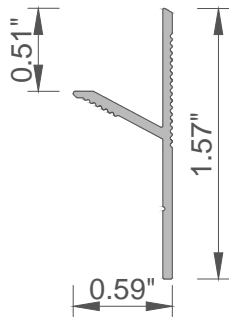
Instruction & Video





Profile for creating shadow line/wall /multiline

Tectum "T3" profile is used to create a 13 mm shadow gap on an existing ceiling. It is installed at the wall-to-ceiling junction to achieve the effect of a floating ceiling or a wall that forms a shadow, while also preventing cracks or any other deformations. The profile enables perfect matching of different colors and materials thanks to the gap created by the shadow. It does not replace the standard CD profile but can be used in wet construction systems, where it also serves as a guide for applying cement plaster.



Brand: Tectum & Murus

Profile: T3

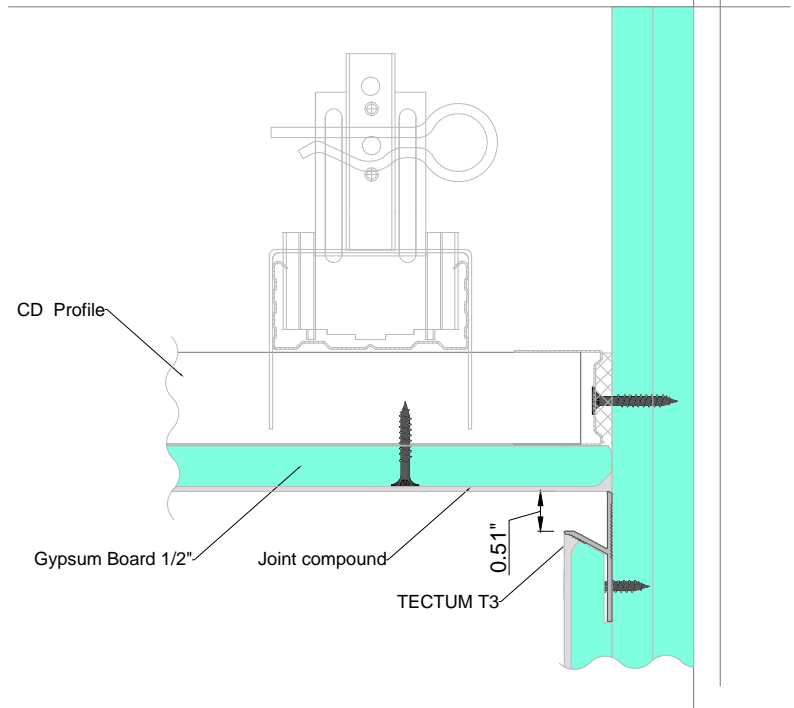
Color: black, white

Material: aluminum

Country of origin: Europe



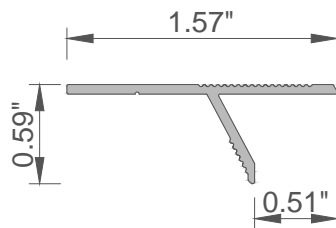
Instruction & Video





Profile for creating shadow line/wall /multiline

Tectum "T3" profile is used to create a 13 mm shadow gap on an existing ceiling. It is installed at the wall-to-ceiling junction to achieve the effect of a floating ceiling or a wall that forms a shadow, while also preventing cracks or any other deformations. The profile enables perfect matching of different colors and materials thanks to the gap created by the shadow. It does not replace the standard CD profile but can be used in wet construction systems, where it also serves as a guide for applying cement plaster.



Brand: Tectum & Murus

Profile: T3

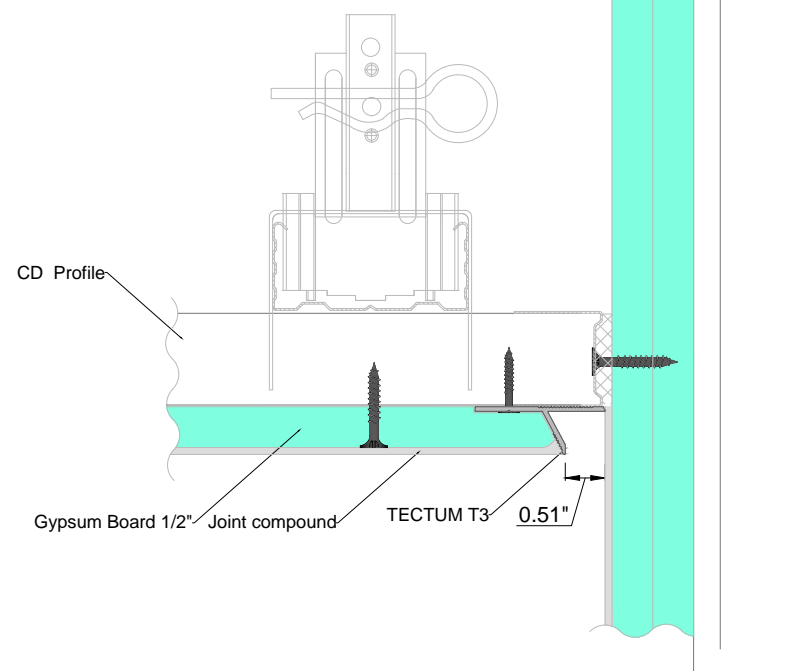
Color: black, white

Material: aluminum

Country of origin: Europe



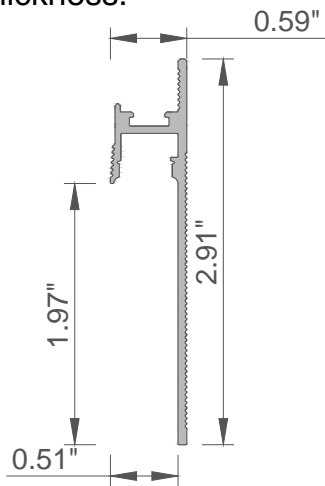
Instruction & Video





Shadow gap skirting board

The Murus “H1” series floor skirting provides a clear and elegant transition between the wall and the floor, while also creating the effect of a floating wall. The aluminum skirting board is an advanced solution for designing a minimalist interior, allowing for harmonious matching of floor and wall colors. The skirting height from the floor with installed parquet is 1.38". It is resistant to household chemicals and ultraviolet radiation. It is used for installation beneath gypsum boards in one or two layers and is mounted flush with the wall. It can also be installed on a masonry wall with a finishing plaster layer of 0.59 " thickness.



Brand: Tectum & Murus

Profile: H1

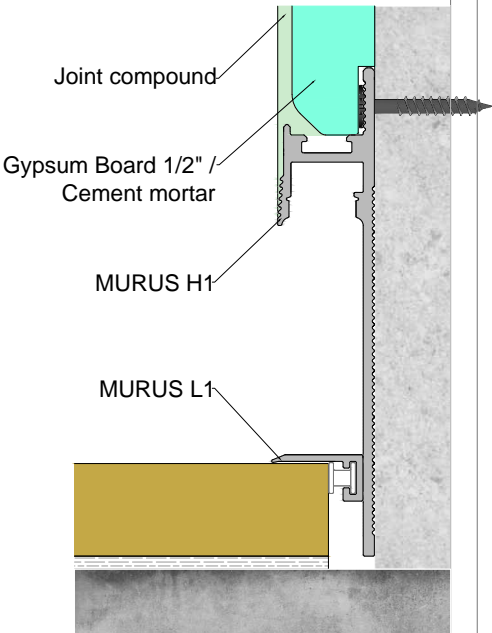
Color: black, white

Material: aluminum

Country of origin: Europe



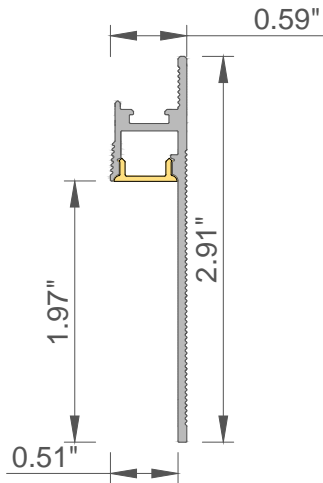
Instruction & Video





Floor molding for creating a shadow effect with LED lighting

The Murus H2 series profile represents a clean and elegant transition between the wall and the floor, while also creating a floating wall effect. The skirting height from the floor with installed parquet is 35 mm. It is installed at the wall-to-floor joint. With a 12 mm wide LED strip channel, it provides additional room lighting and allows for the creation of light effects (interior solutions, evacuation corridors, etc.). Equipped with a 12 mm LED diffuser for light dispersion. Resistant to household chemicals and ultraviolet radiation. It is used for installation under plasterboard in one or two layers and is mounted flush with the wall. It can be complemented with an MDF decorative skirting or combined with the Murus H1 skirting.



Brand: Tectum & Murus

Profile: H2

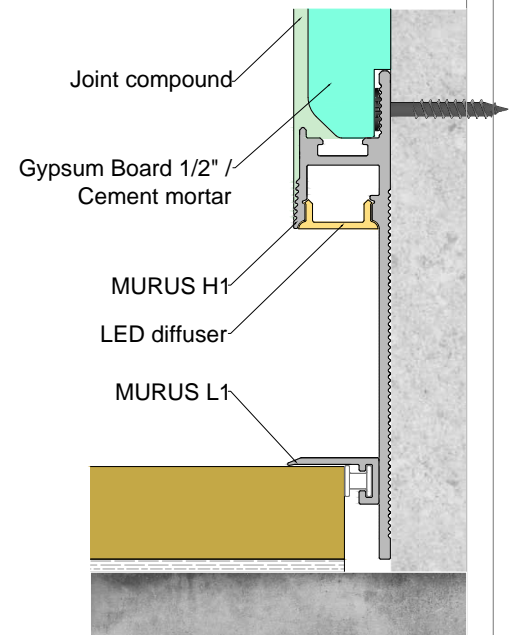
Color: black, white

Material: aluminum

Country of origin: Europe



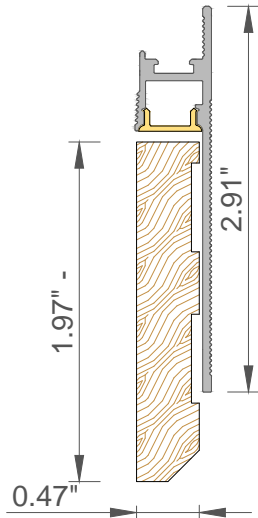
Instruction & Video





Floor molding + MDF molding + LED lighting

The Murus "H3" profile provides a clear and elegant transition between the wall and the floor, while also creating the effect of a perfect junction between the skirting board and the wall. The skirting height from the floor with installed parquet is at least 50 mm. It is installed at the junction of the wall and floor. With a 12 mm wide LED strip channel, it provides additional room lighting and enables the creation of light effects. Equipped with a 12 mm LED diffuser for light dispersion. Resistant to household chemicals and ultraviolet radiation. Designed for installation under gypsum boards in one or two layers, it is mounted flush with the wall.



Brand: Tectum & Murus

Profile: H3

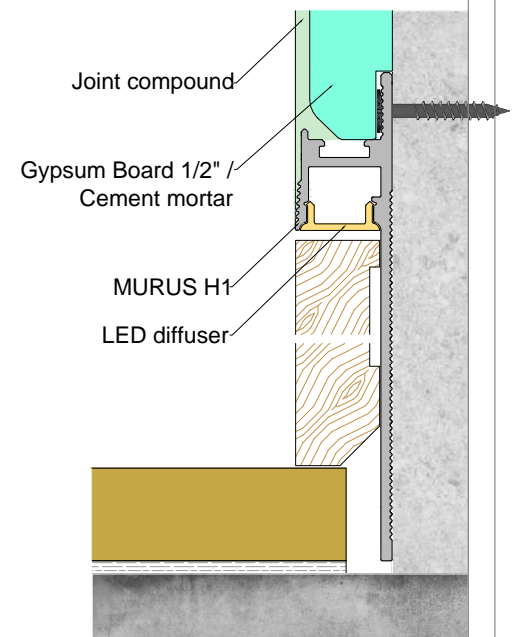
Color: black, white

Material: aluminum

Country of origin: Europe



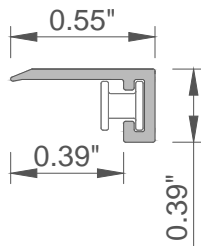
Instruction & Video





Floor molding - MINIMAL

The Murus L1 profile provides a clean and minimal transition between wall and floor, while also creating a floating wall effect. It is installed at the wall-floor junction to achieve a perfectly straight intersection line. Designed for use with both floating and glued floors. Each 78.74" strip comes with 3 clips for fixing.



Brand: Tectum & Murus

Profile: L1

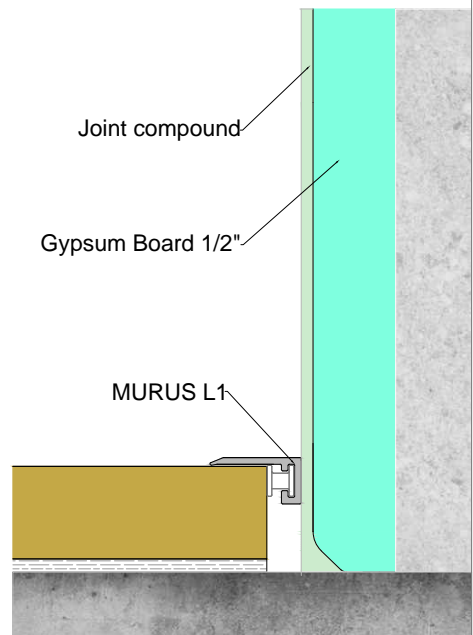
Color: black, white

Material: aluminum

Country of origin: Europe



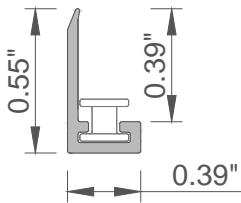
Instruction & Video





Floor molding - MINIMAL

The Murus "L2" profile represents a clean and minimal transition between wall and floor, while also creating the effect of a floating wall. It is installed at the joint between the wall and the floor to ensure a perfect transition. The profile is used for installation beneath plasterboards in one or two layers and is aligned flush with the wall. Each 78.74" comes with 2 clips for fixing.



Brand: Tectum & Murus

Profile: L2

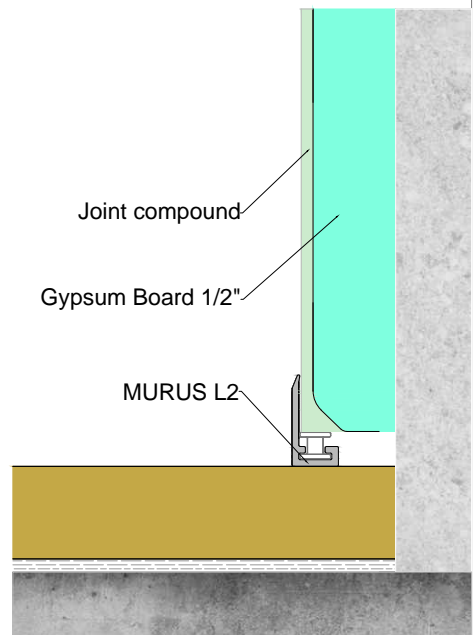
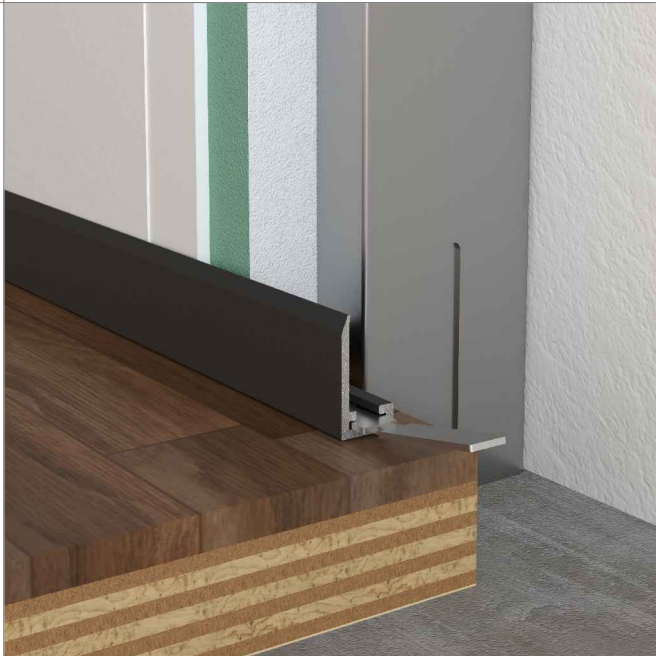
Color: black, white

Material: aluminum

Country of origin: Europe



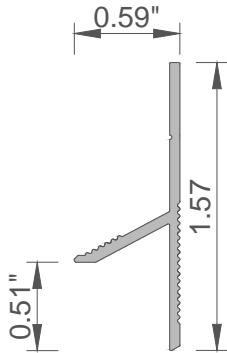
Instruction & Video





Wall moulding

The Tectum “L3” series profile for creating a 13 mm shadow line on the wall is a product of our company, designed to replace traditional parquet skirting boards. It is installed at the junction of the wall and floor to create the effect of a floating wall.



Brand: Tectum & Murus

Profile: L3

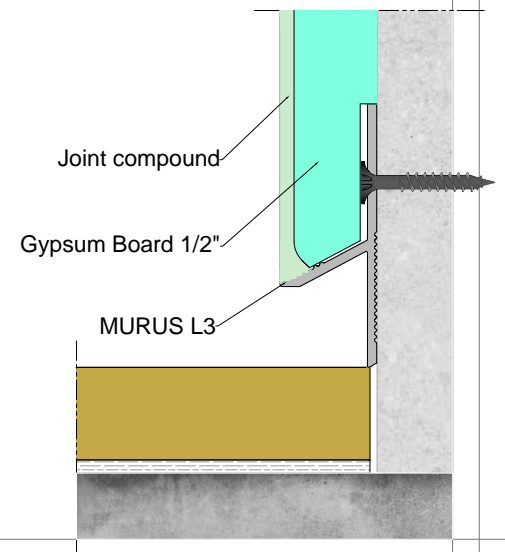
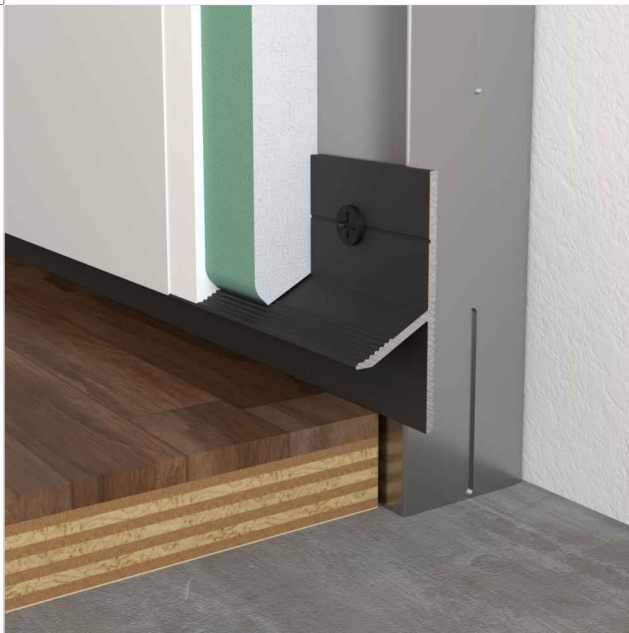
Color: black, white

Material: aluminum

Country of origin: Europe



Instruction & Video







www.us-profiles.com



Contact



Facebook



Instagram



SHOP



YouTube



U.S. PROFILES

www.us-profiles.com